

# NSW CUSTODY STATISTICS

## September 2022



### YOUTH DETENTION POPULATION

173

in September 2021

212

in September 2022



#### CUSTODY STATUS

Between September 2021 and September 2022



↑  
47.7%

Remand population increased 47.7% or 51 young people to 158



↓  
18.2%

Sentenced population decreased 18.2% or 12 young people to 54

#### GENDER

Between September 2021 and September 2022



↑  
8.3%

Young female detainees increased 8.3% or 1 young person to 13



↑  
23.6%

Young male detainees increased 23.6% or 38 young people to 199

#### ABORIGINAL OVER-REPRESENTATION

In Sep 2021

41.6%

of young people in custody were Aboriginal

In Sep 2022

50.5%

of young people in custody were Aboriginal

Between September 2021 and September 2022



0.0%

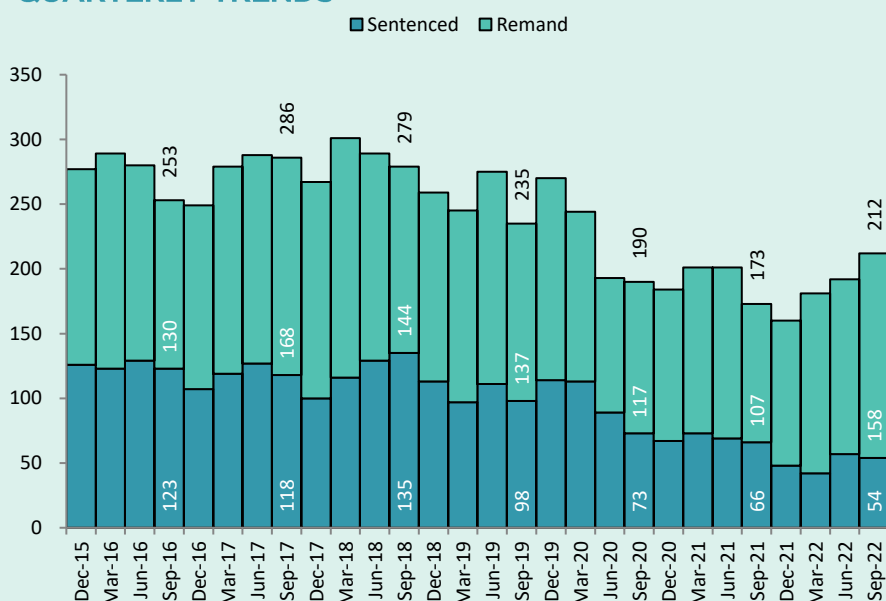
Young Aboriginal female detainees no change 0.0% or 0 young people to 4



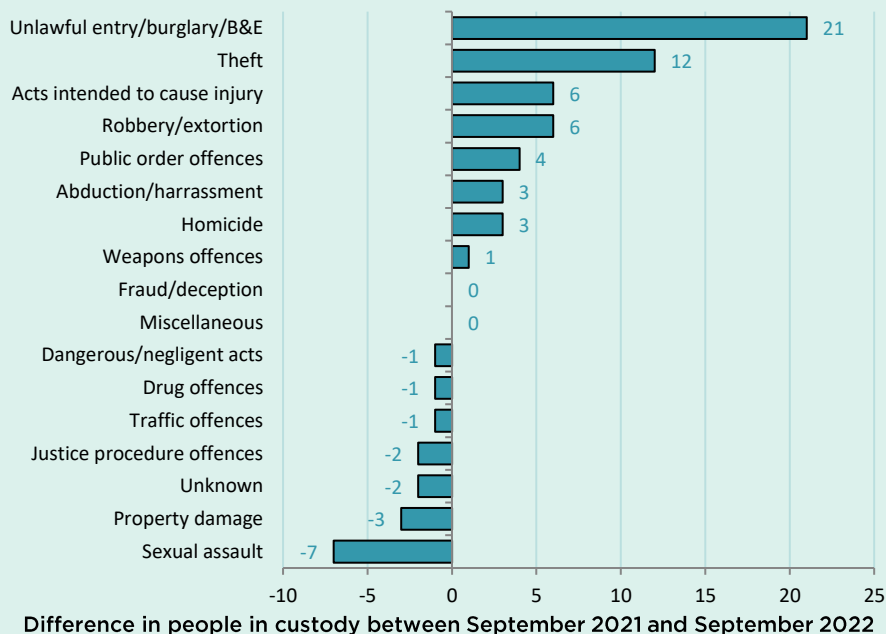
↑  
51.5%

Young Aboriginal male detainees increased 51.5% or 35 young people to 103

#### QUARTERLY TRENDS



#### CHANGE IN YOUTH CUSTODY BY OFFENCE



# NSW CUSTODY STATISTICS

## September 2022

### PRISON POPULATION

**12,254** **12,452**

in September 2021

in September 2022



#### LEGAL STATUS

Between September 2021 and September 2022



↑ 13.4%

Remand population increased 13.4% or 560 people to 4,733



↓ 4.5%

Sentenced population decreased 4.5% or 362 people to 7,719

#### GENDER

Between September 2021 and September 2022



↑ 0.3%

Female custody population increased 0.3% or 2 people to 785



↑ 1.7%

Male custody population increased 1.7% or 196 people to 11,667

#### ABORIGINAL OVER-REPRESENTATION\*

In Sep 2021

**28.2%**

of prisoners were Aboriginal

In Sep 2022

**29.2%**

of prisoners were Aboriginal

Between September 2021 and September 2022



↑ 10.1%

Aboriginal female custody population increased 10.1% or 29 people to 317

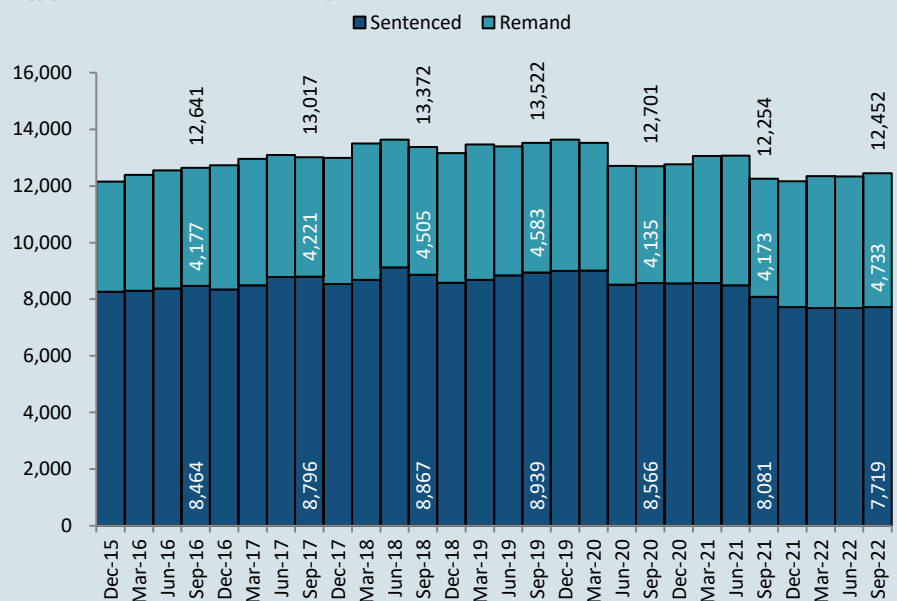


↑ 4.8%

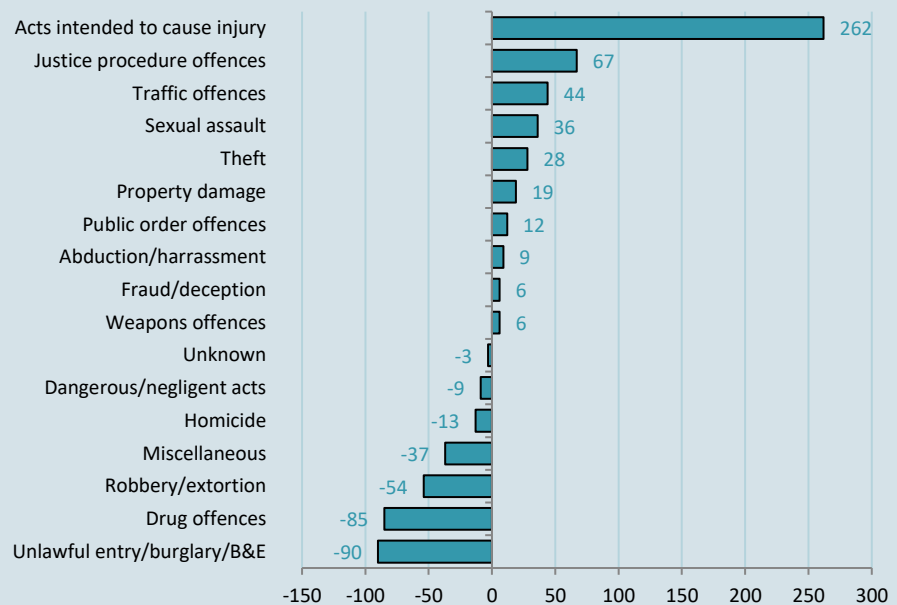
Aboriginal male custody population increased 4.8% or 152 people to 3,322

\*Due to delays in identification of Aboriginal status the number of Aboriginal persons in adult custody is potentially undercounted by up to 2% in more recent months.

#### QUARTERLY TRENDS



#### CHANGE IN PRISON NUMBERS BY OFFENCE



Difference in people in custody between September 2021 and September 2022